



KARDIOGER DE MÉXICO

Estudio Kardioger Holter - ECG de 3 canales

Paciente	Demo Kardioger	Fecha	30/11/2012
Sexo	---	Edad	---
N° historia clínica	---	Peso	---
Dirección	---	Obra social	---
Provincia	---	Estatura	---
		Teléfono	---
Doctor	---	Localidad	---
Indicación/motivo	---	Fecha/hora inicio grabación	27/11/2012 10:46 p.m.
Medicación/tratamiento	---	Referido por	---
Observaciones	---		

Frecuencia cardíaca Media: 64 Mínima: 41 a las 04:37:33 Máxima: 102 a las 23:31:26 Cantidad total de latidos: 87888	Análisis de variabilidad de la frecuencia cardíaca SDNN: 204 ms. RMSSD: 127 ms. SDNN index: 128 ms. PNN50: 60 % SDANN index: 167 ms.
Extrasístoles ventriculares Total: 3 latidos Bigem.: 0 eventos Pares: 0 eventos Trigem.: 0 eventos Taquicardias: 0 eventos Taq. más extensa: 0 latidos a las ---	Extrasístoles supraventriculares Total: 947 latidos Pares: 13 eventos Taquicardias: 6 eventos Taq. más extensa: 29 latidos a las 04:25:24
Análisis ST Media Canal 1: -0.3 mm. Media Canal 2: -0.1 mm. Media Canal 3: -1.4 mm. <i>10 mm = 1 mV</i>	Bradicardia - pausas Bradicardia (FC < 60 bpm): 95 eventos Pausas (RR > 2.0 seg.): 7 eventos

Conclusiones

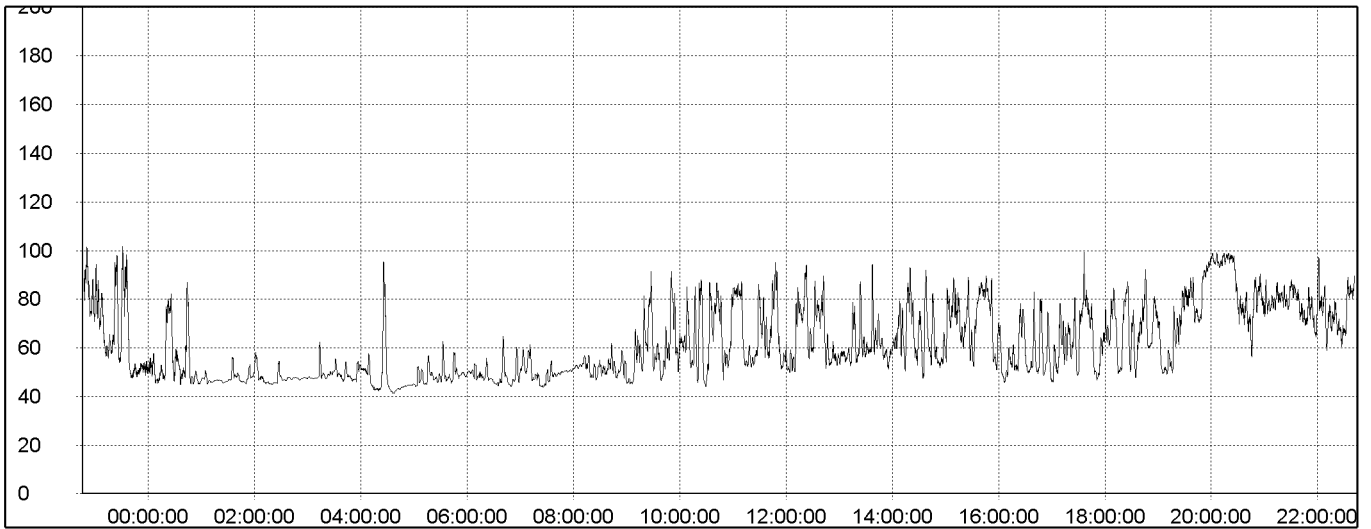
Sumario 24 hs.

Hora (ini)	Latidos	Frecuencia cardíaca			Ventriculares			Supra ventriculares			Bigem.	Trigem
		Mín.	Med.	Máx.	Total	Pares	Taq.	Total	Pares	Taq.		
22:46	4333	48	76	102	3	-	-	19	-	-	-	-
23:46	3328	45	57	87	-	-	-	26	-	-	-	-
00:46	2846	45	48	71	-	-	-	1	-	-	-	-
01:46	2876	45	48	59	-	-	-	-	-	-	-	-
02:46	2944	46	49	63	-	-	-	-	-	-	-	-
03:46	2929	41	51	96	-	-	-	45	-	2	-	-
04:46	2874	44	48	63	-	-	-	2	-	-	-	-
05:46	2944	45	49	65	-	-	-	1	-	-	-	-
06:46	2969	44	50	62	-	-	-	1	-	-	-	-
07:46	3116	47	52	62	-	-	-	1	-	-	-	-
08:46	3381	45	58	92	-	-	-	26	1	-	-	-
09:46	3972	44	68	92	-	-	-	35	-	1	-	-
10:46	3950	47	68	88	-	-	-	12	-	-	-	-
11:46	4059	50	70	95	-	-	-	27	1	-	-	-
12:46	3638	53	61	95	-	-	-	37	-	-	-	-
13:46	3887	48	66	93	-	-	-	32	-	-	-	-
14:46	4203	52	72	89	-	-	-	84	2	2	-	-
15:46	3574	46	62	90	-	-	-	13	-	-	-	-
16:46	3851	46	66	100	-	-	-	82	-	-	-	-
17:46	3883	47	66	90	-	-	-	127	-	-	-	-
18:46	4107	49	70	93	-	-	-	46	-	-	-	-
19:46	5247	58	89	99	-	-	-	129	9	-	-	-
20:46	4797	56	80	91	-	-	-	42	-	1	-	-
21:46	4180	59	75	97	-	-	-	159	-	-	-	-

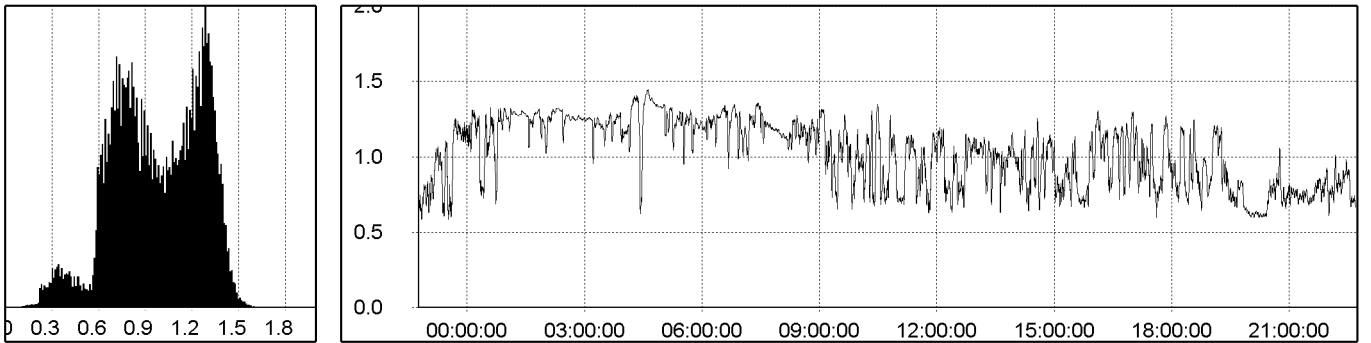
Bradycardia (FC < 60 bpm) - pausas (RR > 2.0 seg.)

Hora (ini)	FC mín.	Brad. eventos	Brad. latidos	Pausas
22:46	48	4	483	7
23:46	45	3	2905	-
00:46	45	-	-	-
01:46	45	-	-	-
02:46	46	1	7025	-
03:46	41	1	3429	-
04:46	44	1	2943	-
05:46	45	1	3311	-
06:46	44	2	1463	-
07:46	47	1	4623	-
08:46	45	8	2410	-
09:46	44	10	1212	-
10:46	47	5	1570	-
11:46	50	7	1216	-
12:46	53	12	2314	-
13:46	48	10	1366	-
14:46	52	7	844	-
15:46	46	5	1794	-
16:46	46	8	1497	-
17:46	47	6	1140	-
18:46	49	1	759	-
19:46	58	-	-	-
20:46	56	1	57	-
21:46	59	1	35	-

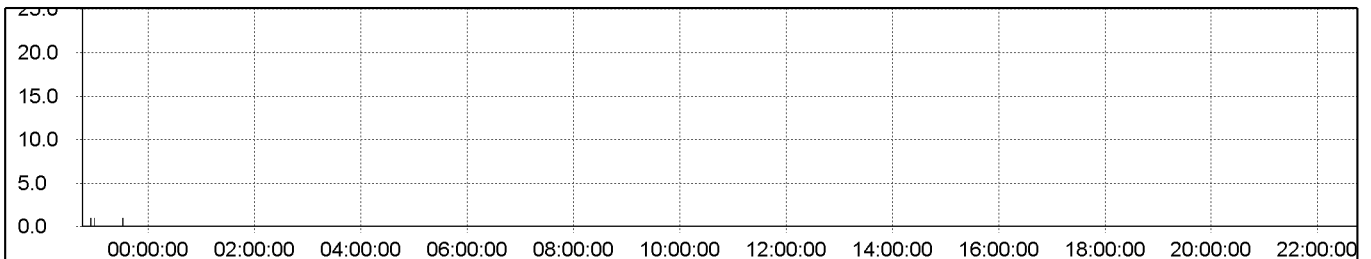
Frecuencia cardíaca - tendencia 24 hs.



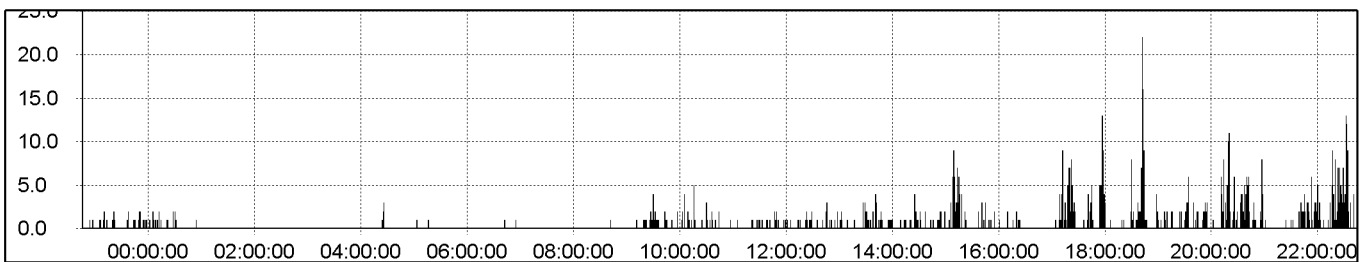
Intervalos RR (todos los latidos) - Distribución / tendencia 24 hs.



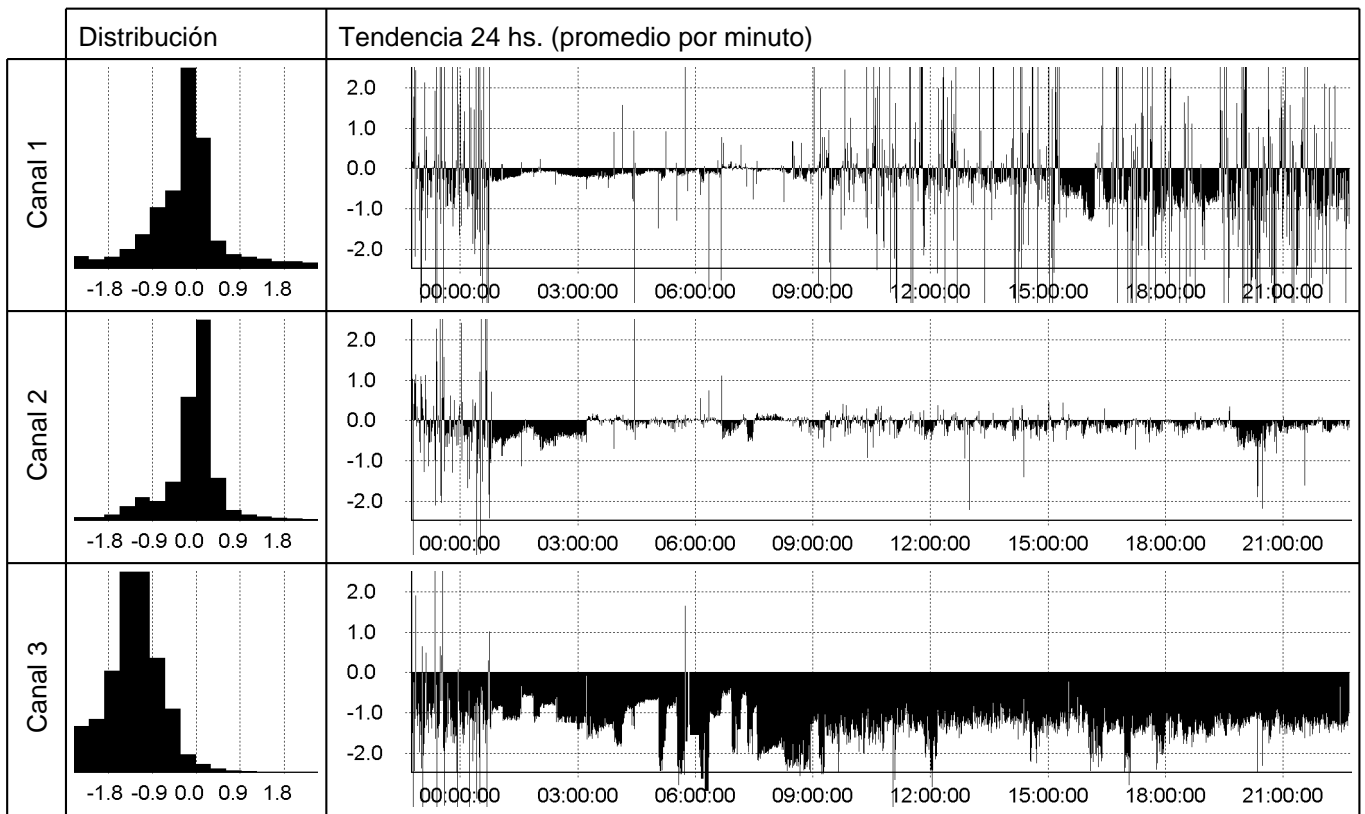
Eventos ventriculares por minuto



Eventos supraventriculares por minuto



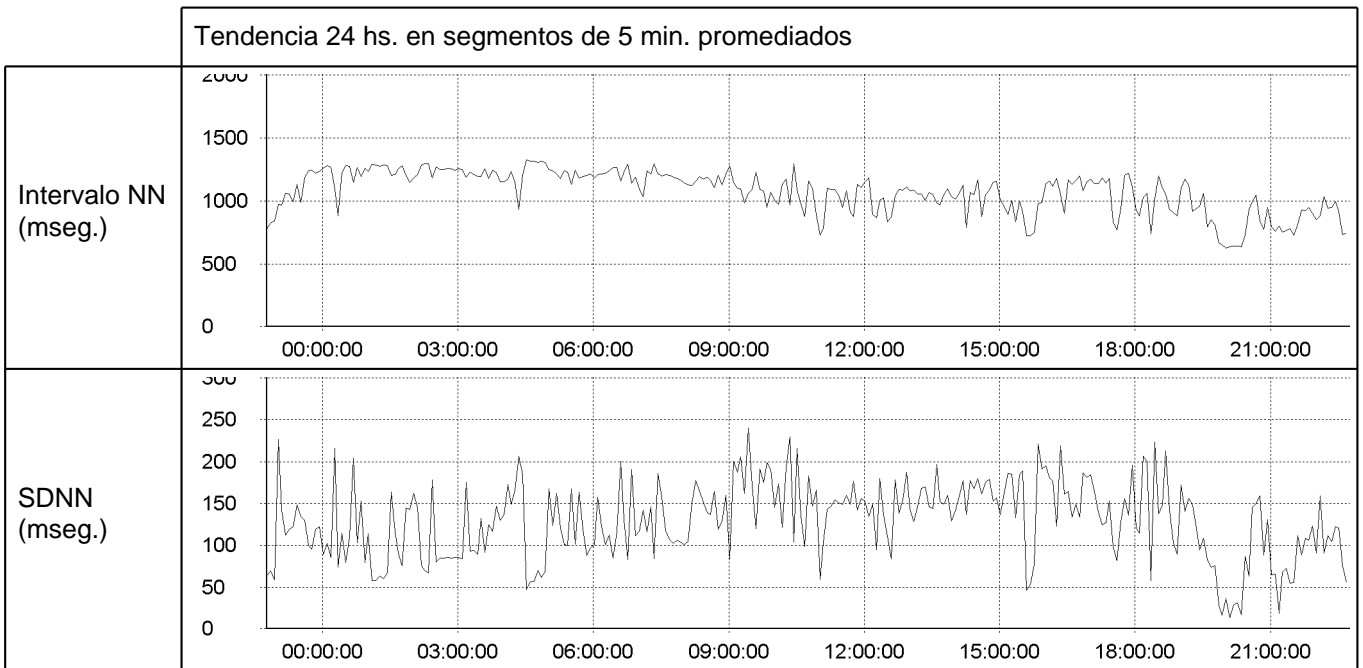
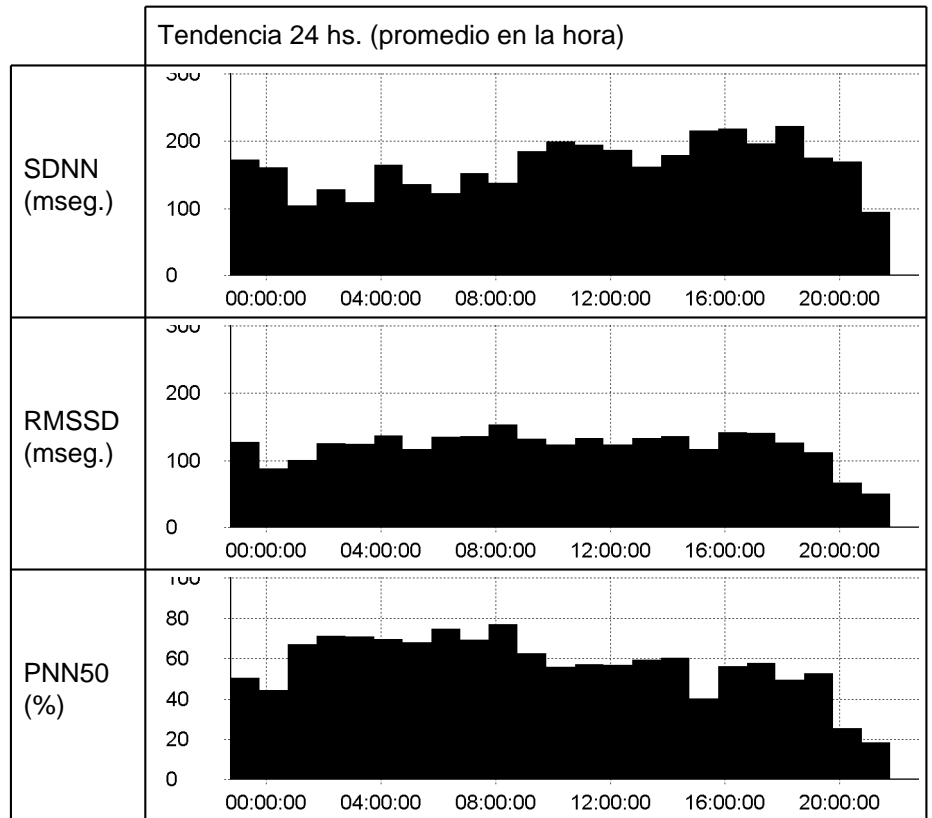
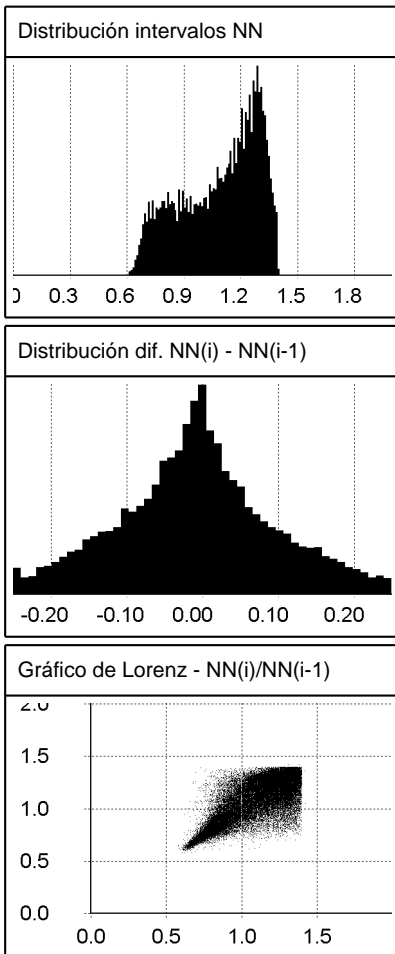
Análisis ST



Análisis ST - resumen 24 hs.

Hora (ini)	Nivel ST prom. (mm.)			Eventos ST			Máx. elevación			Máx. depresión		
	Canal 1	Canal 2	Canal 3	Canal 1	Canal 2	Canal 3	Canal 1	Canal 2	Canal 3	Canal 1	Canal 2	Canal 3
22:46	-0.2	0.1	-1.1	21	17	41	5.8	4.0	3.5	4.7	4.0	4.5
23:46	-0.3	0.0	-1.4	31	16	44	4.5	13.4	1.0	9.3	3.4	7.9
00:46	-0.2	-0.4	-1.0	-	2	31	0.2	0.7	-	0.3	1.1	1.4
01:46	-0.1	-0.4	-0.9	-	-	27	0.2	-	-	0.4	0.8	1.3
02:46	-0.2	-0.2	-1.3	-	-	59	-	0.2	-	0.5	0.6	1.7
03:46	-0.2	0.0	-1.2	2	1	31	1.6	3.3	-	4.1	0.7	1.8
04:46	-0.1	-0.1	-1.3	3	-	27	3.3	0.1	1.7	1.5	0.3	2.8
05:46	-0.2	0.0	-1.5	2	1	48	0.8	1.1	-	3.1	0.5	3.0
06:46	0.0	-0.1	-1.3	-	-	36	0.6	0.2	-	0.8	0.5	2.2
07:46	0.0	0.0	-2.0	-	-	60	0.7	0.2	-	0.8	0.3	2.6
08:46	-0.2	-0.1	-1.7	6	-	60	3.2	0.2	-	3.7	0.7	2.6
09:46	0.2	0.0	-1.5	13	-	59	5.4	0.4	-	2.5	0.9	2.0
10:46	-0.2	-0.1	-1.4	14	-	55	7.4	0.2	-	7.3	0.5	3.5
11:46	0.0	-0.1	-1.5	19	-	57	5.9	0.4	-	9.1	0.5	2.9
12:46	0.0	-0.2	-1.2	5	1	56	9.2	0.2	-	8.4	2.2	1.5
13:46	0.2	-0.2	-1.3	15	1	53	10.9	0.4	-	6.2	1.4	2.3
14:46	-0.3	-0.1	-1.2	13	-	55	11.2	0.5	-	8.7	0.5	1.8
15:46	-0.5	-0.2	-1.4	23	-	55	3.5	0.3	-	1.5	0.4	2.4
16:46	-1.0	-0.1	-1.5	26	-	60	7.8	0.1	-	14.5	0.7	2.8
17:46	-0.7	-0.1	-1.5	27	-	60	4.3	0.2	-	3.6	0.4	2.4
18:46	-0.7	-0.1	-1.3	18	-	59	3.2	0.3	-	3.9	0.3	1.7
19:46	-0.7	-0.5	-1.3	37	3	58	5.4	0.0	-	4.4	2.2	2.5
20:46	-0.8	-0.2	-1.3	30	1	58	4.0	0.1	-	9.0	1.6	1.6
21:46	-0.8	-0.1	-1.3	25	-	54	2.1	0.1	-	4.5	0.3	1.5

Variabilidad de la frecuencia cardíaca



Variabilidad de la frecuencia cardíaca - sumario 24 hs.

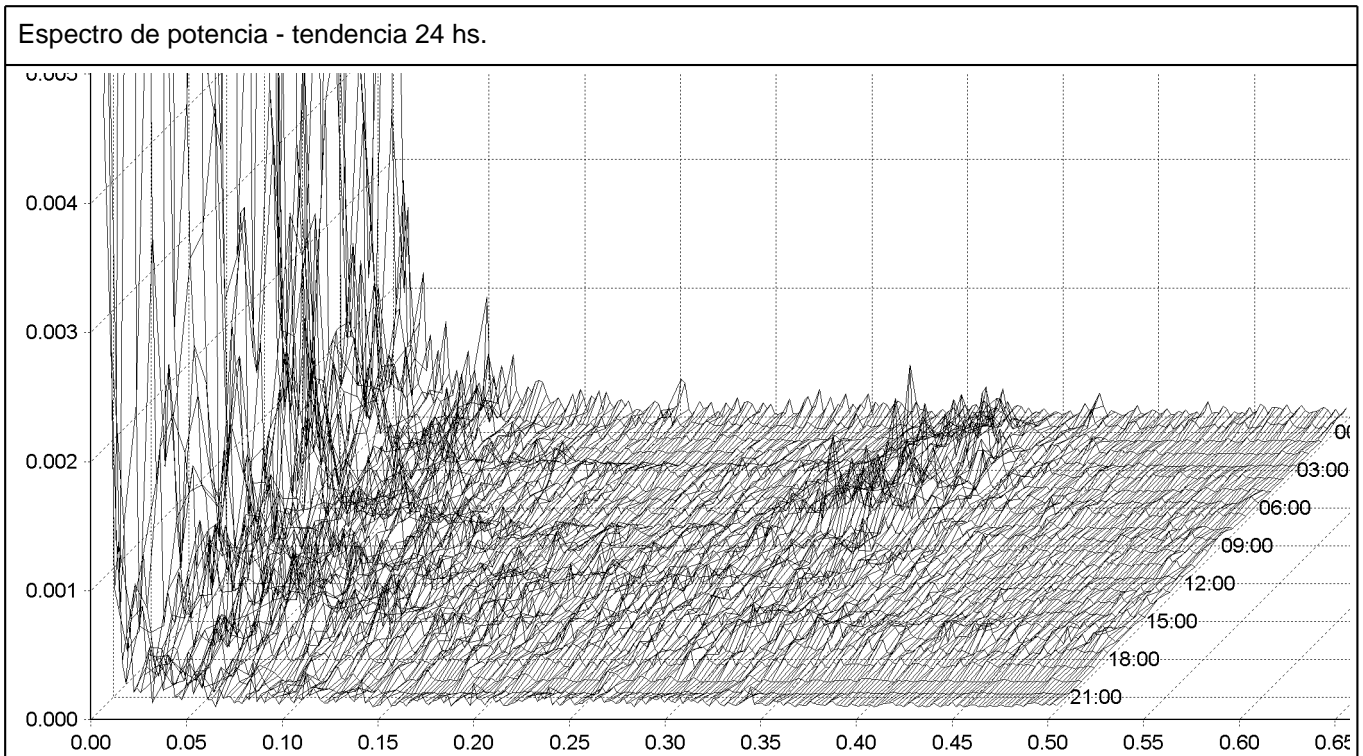
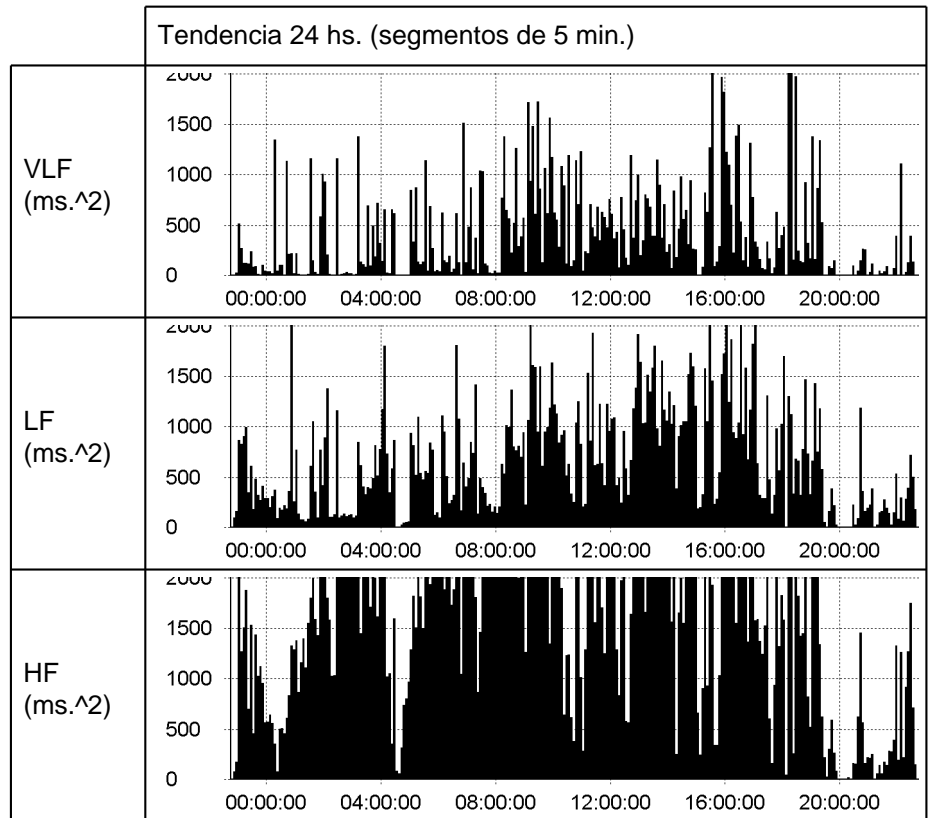
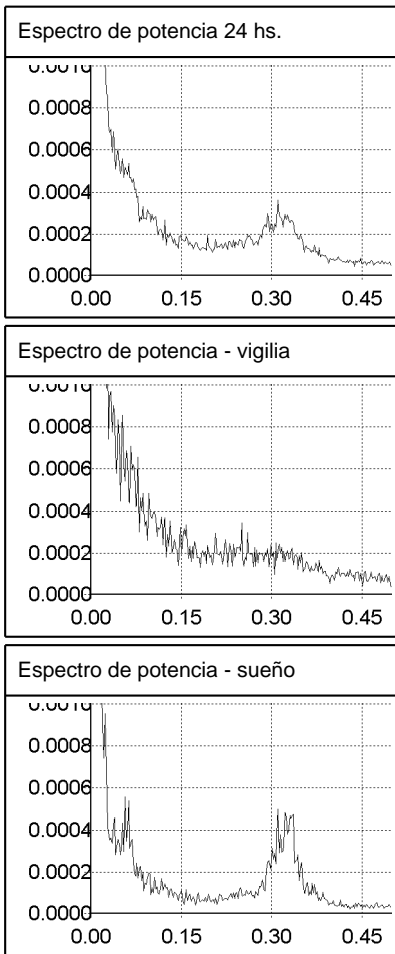
Hora (ini)	#Latidos NN / total	FC med. (bpm)	NN med. (ms)	SDNN (ms)	RMSSD (ms)	PNN50 (%)
22:46	1239 / 4333	76	1041	172	127	51
23:46	1160 / 3328	57	1209	161	88	44
00:46	2388 / 2846	48	1255	105	101	67
01:46	2443 / 2876	48	1235	128	126	71
02:46	2808 / 2944	49	1225	110	124	71
03:46	1496 / 2929	51	1189	164	137	70
04:46	2148 / 2874	48	1231	136	117	68
05:46	2422 / 2944	49	1215	123	135	75
06:46	2393 / 2969	50	1182	153	136	69
07:46	2907 / 3116	52	1157	138	153	77
08:46	2346 / 3381	58	1135	185	133	63
09:46	1924 / 3972	68	1063	199	124	56
10:46	2521 / 3950	68	1009	195	133	57
11:46	2155 / 4059	70	1027	186	124	57
12:46	2775 / 3638	61	1056	162	133	59
13:46	2122 / 3887	66	1043	179	136	60
14:46	2441 / 4203	72	922	216	117	40
15:46	2917 / 3574	62	1037	219	142	56
16:46	1536 / 3851	66	1096	197	141	58
17:46	2088 / 3883	66	1021	222	127	50
18:46	2263 / 4107	70	978	176	112	53
19:46	707 / 5247	89	801	170	67	26
20:46	1107 / 4797	80	782	95	51	19
21:46	1134 / 4180	75	923	137	94	51

Total	24 hs.	Vigilia	Sueño
SDNN (ms.)	204	203	131
SDNN index (ms.)	128		
SDANN index (ms.)	167		
RMSSD (ms.)	127	133	119
PNN50 (%)	60	55	68
TINN index (ms.)	812		
HRV index	47		

Riesgo

<< SDNN 24hs. = 204 ms.

Variabilidad de la frecuencia cardíaca - potencia espectral

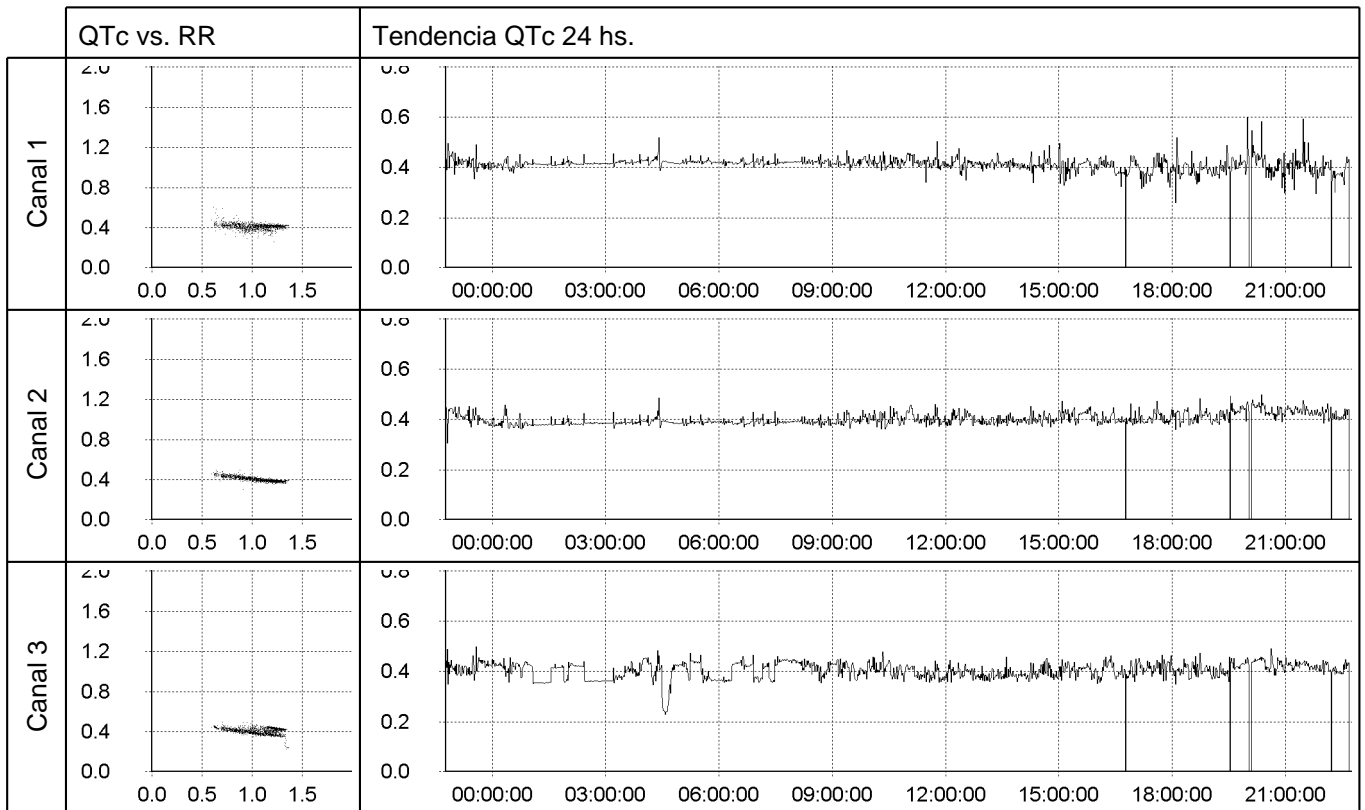
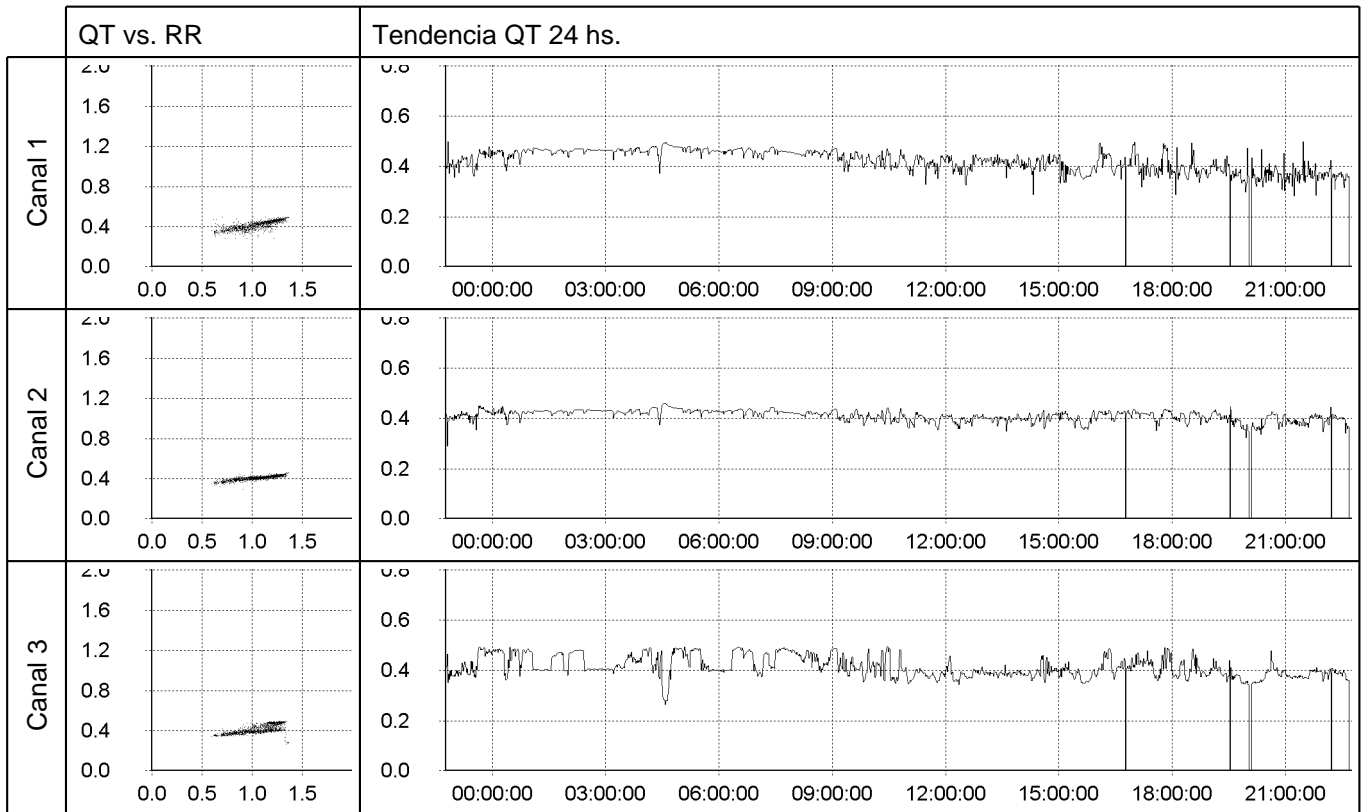


Variabilidad de la frecuencia cardíaca - potencia espectral - sumario 24 hs.

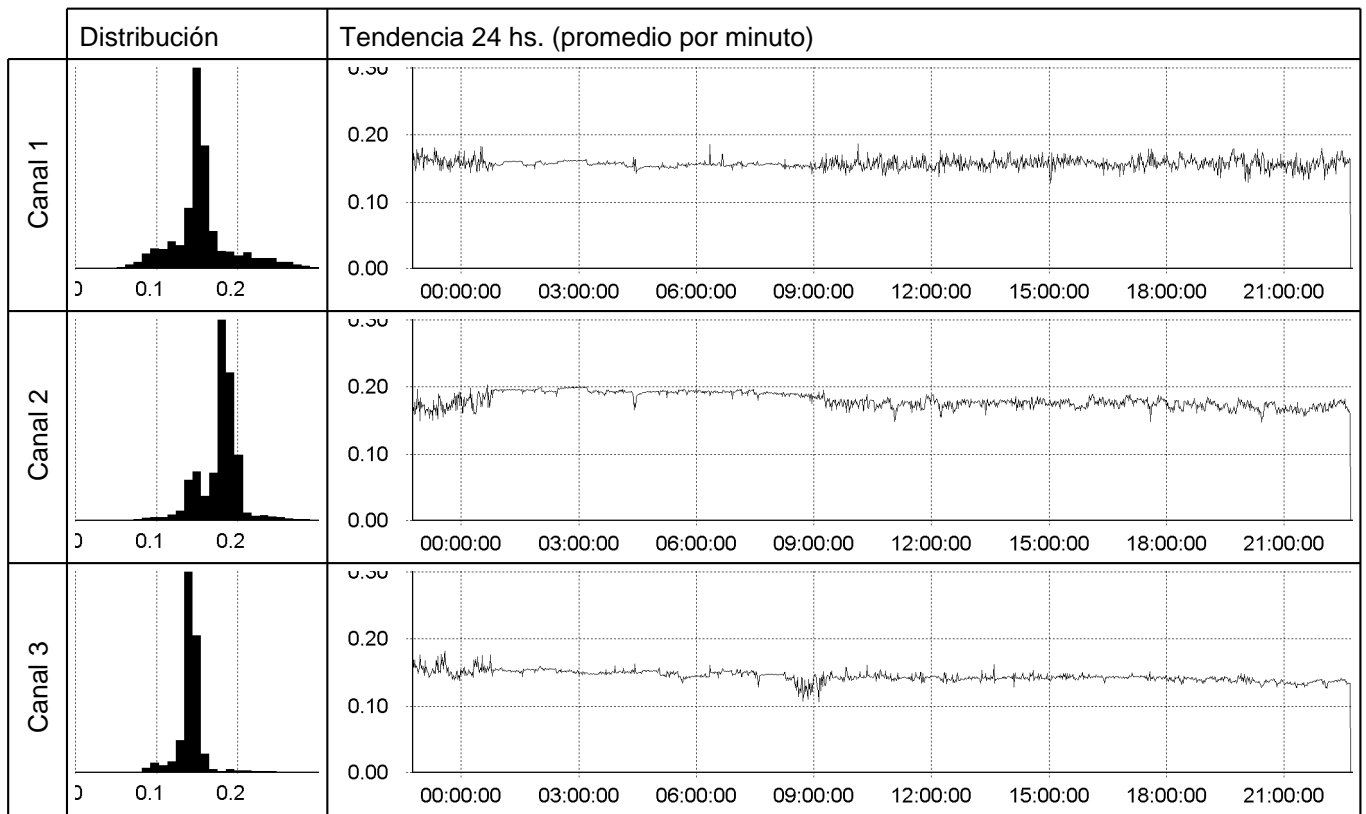
Hora (ini)	ULF (ms ²)	VLF (ms ²)	LF (ms ²)	LF norm	HF (ms ²)	HF norm	LF/HF	Total
22:46	108	1379	1921	30	4534	70	0.42	7942
23:46	23	1952	1006	30	2375	70	0.42	5356
00:46	7	525	1225	27	3285	73	0.37	5042
01:46	38	920	1083	18	4921	82	0.22	6962
02:46	10	584	671	12	4751	88	0.14	6016
03:46	25	1824	2591	29	6328	71	0.41	10768
04:46	25	1050	1290	25	3789	75	0.34	6154
05:46	10	527	1515	20	6145	80	0.25	8197
06:46	57	1520	1254	19	5425	81	0.23	8256
07:46	13	953	1185	13	7656	87	0.15	9807
08:46	69	2361	2643	32	5493	68	0.48	10567
09:46	53	3348	2686	34	5242	66	0.51	11330
10:46	328	1717	2209	27	6117	73	0.36	10372
11:46	193	1781	1701	27	4590	73	0.37	8264
12:46	24	1420	2625	30	6205	70	0.42	10274
13:46	26	1858	2516	30	5993	70	0.42	10393
14:46	485	1976	2258	32	4742	68	0.48	9461
15:46	341	2653	2688	31	5964	69	0.45	11647
16:46	125	2716	3235	35	6070	65	0.53	12147
17:46	154	3609	1881	31	4101	69	0.46	9745
18:46	137	2036	1586	32	3433	68	0.46	7192
19:46	158	1367	1012	40	1499	60	0.68	4035
20:46	7	497	808	51	767	49	1.05	2079
21:46	26	1038	1117	28	2832	72	0.39	5013

Total	24 hs.	Vigilia	Sueño
ULF (ms²)	431	299	23
VLF (ms²)	1869	2094	1102
LF (ms²)	2016	2670	1274
LF norm	27	31	22
HF (ms²)	5466	5925	4641
HF norm	73	69	78
LF/HF	0.37	0.45	0.27
Total potencia	9783	10987	7039

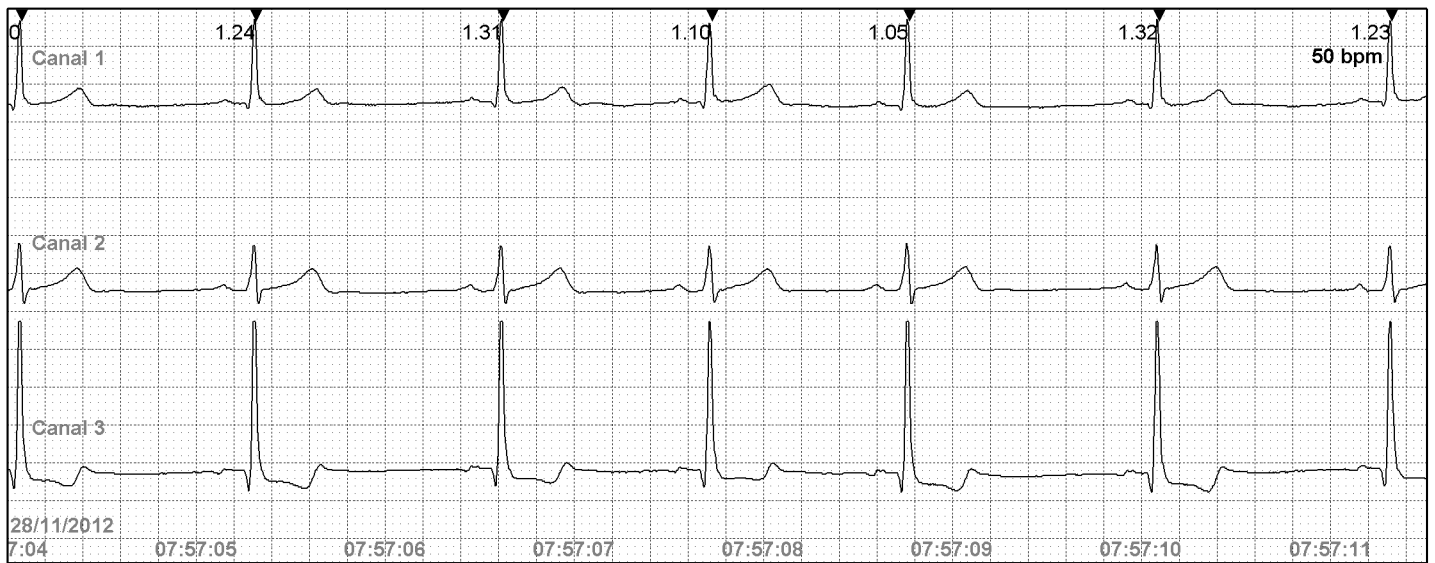
Análisis intervalo QT



Análisis intervalo PR



- 25 mm/seg, 10 mm/mV



- 25 mm/seg, 10 mm/mV



- 25 mm/seg, 10 mm/mV

